



GOULBURN 1800 FV

2018 STOCK

A Compact 18ft Family Off-Road Caravan, available in 2 or 3 bunks!

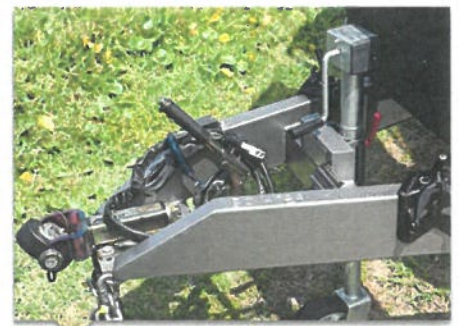
Featuring a queen-sized bed in an East/West orientation, plus the option for 2 or 3 bunks in a smart layout, this off-roader has been meticulously designed to take your family all over Australia



**3.7T CRUISEMASTER
SUSPENSION**



**18FT OFF-ROAD VAN
WITH 2 OR 3 BUNKS**



**D035 HITCHMASTER
COUPLING**

**FULL OFF-ROAD WARRANTY
ANY SURFACE IN AUS - NO EXCLUSIONS**

+61 3 9357 9952

www.elitecaravans.com.au

facebook.com/elitecaravans

GOULBURN 1800 FV



SPECIFICATIONS:

CHASSIS FEATURES

- ✓ ALL GAL CHASSIS
- ✓ TANDEM AXLE
- ✓ 3.7T CRUISEMASTER COIL XT SUSPENSION WITH DUAL SHOCKERS
- ✓ 16" ALLOYS MICKEY THOMPSON BAJA MTZ
- ✓ 12" BRAKES
- ✓ 2 x 9KG GAS BOTTLES
- ✓ 2 x JERRY CAN HOLDERS
- ✓ SPARE WHEEL ON BUMPER
- ✓ HITCHMASTER D035 COUPLING
- ✓ MESH ON A-FRAME

APPLIANCES

- ✓ 3 GAS/1 ELEC MINIGRILL
- ✓ 12V RANGEHOOD
- ✓ 25 LTR MICROWAVE
- ✓ WAECO RPD-218 COMPRESSOR FRIDGE
- ✓ FUSION RA-205 SERIES AUDIO WITH BLUETOOTH
- ✓ AIR COMMAND IBIS MK3 AIR CONDITIONER
- ✓ 24" LED TV IN BEDROOM ON 3-ARM BRACKET
- ✓ FRONT LOADER WASHING MACHINE

INTERNAL FEATURES

- ✓ EAST/WEST QUEEN BED
- ✓ TWIN BUNKS WITH BUILT-IN LADDER
- ✓ OPTION FOR 3 BUNKS
- ✓ L-SHAPE LOUNGE
- ✓ SWING-AWAY TABLE LEG
- ✓ DRAWERS UNDER LOUNGE
- ✓ SLIDE-OUT PANTRY
- ✓ GALVANISED LINED FLOORING
- ✓ EURO-STYLE HANDLES
- ✓ FIRE EXTINGUISHER

ELECTRICAL

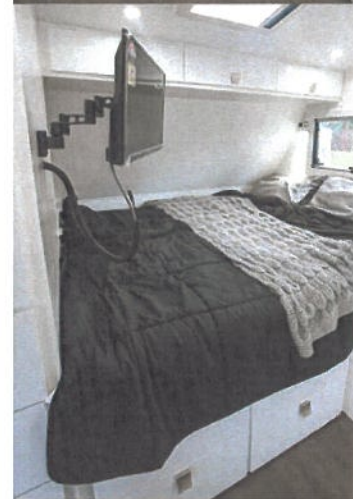
- ✓ HELLA LIGHTS THROUGHOUT
- ✓ STRIP LIGHT OVER KITCHEN
- ✓ 2 x 120AH FULL RIVER BATTERIES
- ✓ REDARC BATTERY MANAGEMENT SYSTEM WITH SOLAR REGULATOR
- ✓ 150W SOLAR PANEL
- ✓ ANDERSON PLUG
- ✓ WINEGARD HV ANTENNA
- ✓ EXTERNAL FUSION SPEAKERS
- ✓ SMOKE DETECTOR
- ✓ REDARC DIGITAL PANEL
- ✓ HELLA TAIL LIGHTS WITH SWITCH TO USE AS EXTERNAL LIGHTING

EXTERNAL FEATURES

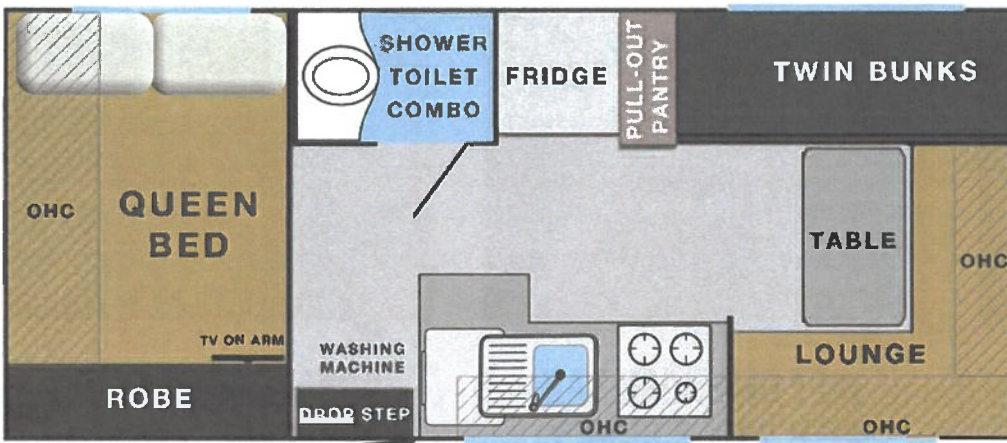
- ✓ COMPOSITE CLADDING MADE IN GERMANY (AVAILABLE IN VARIETY OF COLOURS)
- ✓ DOMETIC WINDOWS
- ✓ RANGER MINI SKYLIGHT & POWER HATCH
- ✓ DUST PRESSURE HATCH
- ✓ 14FT AWNING
- ✓ FULL GAL LINED TUNNEL BOOT
- ✓ CHECKER PLATE FRONT, REAR & SIDES
- ✓ STONESHIELD D-FLECTOR
- ✓ FOLD-DOWN PICNIC TABLE
- ✓ GAS BAYONET FITTING

PLUMBING

- ✓ ENDLESS HOT WATER SYSTEM
- ✓ SHOWER/TOILET COMBO
- ✓ COMBO FILTER FLICK MIXER TAP
- ✓ STAINLESS STEEL SINK
- ✓ TAP ON 'A' FRAME
- ✓ FIBREGLASS TEARDROP BASIN
- ✓ 12V WATER PUMP
- ✓ 2 x 95LTR WATER TANKS
- ✓ FIBREGLASS SHOWER
- ✓ EXTERNAL SHOWER



Goulburn 1800FV Dimensions: 18' x 7'8"



Specifications subject to change without notice, check website for latest specifications. E&OE. © 2017

